



QUICKSTEP
MANUFACTURING

*Wide Range of GRP
Products & Services Under
One Roof...*





About Us	01
GRP Pipes Fittings & Accessories	02
GRP Manholes & Components	03
In-Situ Works & Custom Products	04
GRP Ladders & Safety Cage	05
GRP Kiosks & Other Enclosures	06
GRP Access	07
Other Services	08





ABOUT US

(Quickstep Manufacturing)

Company Overview

Quickstep Manufacturing has years of proven quality and success in the production and engineering services related to any GRP products. The factory is located in the Industrial City of Abu Dhabi I (ICAD 1), Abu Dhabi, UAE.

The company is continually expanding its production capacity and broadening its range of products and services, which are applied with the latest hand lay-up process of resin transforming technology (RTM) and most widely accepted raw materials to comply with the requirements of any infrastructure projects and developments.

Updating our facilities is a continuous process to keep up to date with the industry requirements and to cater for the ever growing requirements for GRP products not only in the UAE but all throughout the Middle East.

Our Strength

The professional approach of the company is evident in the following unique features:

1. Proactive Management - Foresighted view of client needs and pursuits beyond immediate & obvious needs
2. Reliable Service - Timely completion with minimal discussions & clarifications
3. Pre-Production of Samples - Prototypes or Mockup samples are provided to customers upon request
4. Commitment - Client satisfaction through quality & timely work
5. Technical Assistance - Explanations/presentations about the versatility & utility of GRP as a high quality but standard solution for industrial requirements
6. Engineering & Drawing Services - complete package of engineering aspects & shop drawings for regular as unique works
7. Machining, Pre-Assembly & On-Site Works - Execution as per client requirements such as grating, handrail system, joint laminations, and many more

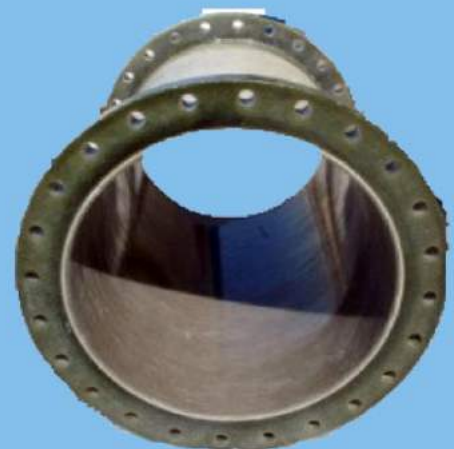
Quality Objective

To be known as a company of repute who consistently endeavor to do the following:

1. To keep customers ahead always and thus progress towards a long term working relationship
2. Manufacture products at competitive rates without compromising quality of work and service
3. Develop long term relationship with its supplier and meet commitments on time
4. Develop human resources for effective professional management & maintain a healthy relationship

Certification

Our products are tested at independent world-known testing laboratories adhering to international standards as well as at the in-house laboratory. Material Test Reports are made always available upon request.





GRP PIPES FITTINGS & ACCESORIES

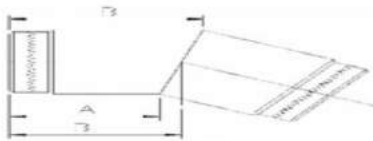
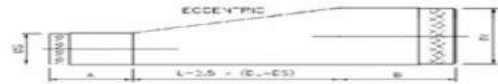
(Quickstep Manufacturing)

Various GRP pipe fittings & accessories are manufactured by hand lay process in factory as well as on site works. Fittings include bends of different angles (10° – 270°), tees (concentric, eccentric), flanges (open & blind), couplings (Ø100mm – Ø1200mm), reducer joints, end caps etc., according to project requirements

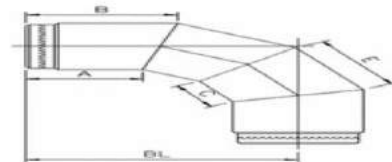
The highly flexible materials used allow the fabrication of "tailor-made" design based on customers' requirement. Chopped strand mats, woven roving impregnated with suitable resins (Vinyl Ester, Isophthalic) are the main reinforcing materials used in the fabrication of the fittings.



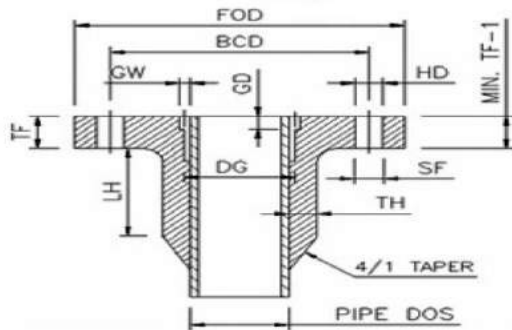
Concentric & Eccentric Tee



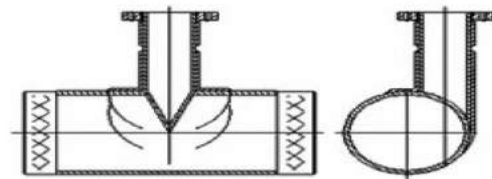
Bends



Flange



Air/Scour Valve Tee





GRP MANHOLES & COMPONENTS

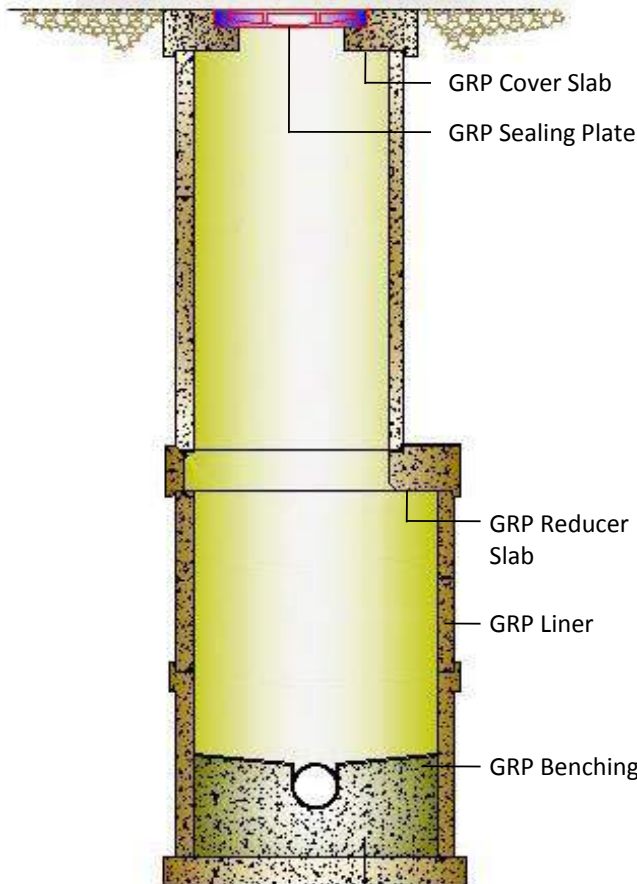
(Quickstep Manufacturing)



GRP Manholes are suitable for use in the corrosive environments including cooling water lines, storm water lines and sanitary sewers with the temperature range of 40°C to 65°C. The manhole is designed for internal non-pressure usage except for the head of any contained liquid.

The manholes form an integral part of the sewerage/drainage line. They act as the junction of direction change and as a collection point of the water flowing through the line. The inner surface of the manhole is laminated with GRP to the required thickness level so as to prevent corrosion from direct exposure to toxic substances. The GRP components include:

- Internal Benching (with suitable channels)
- Shaft (Liner),
- Cover Slab with suitable opening
- Reducer Slab of required dimensions
- Sealing plates
- Outer Base (for double walled manholes)
- Outer Liner for the Shaft

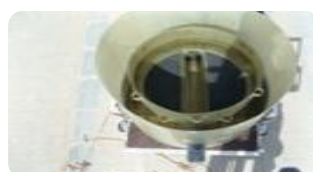


Double wall GRP Manholes are supplied as completely assembled units. GRP assembled units of Inspection chambers, collection chambers & House Connection Chambers are supplied in accordance with the project requirements.

Pumping Stations, Wet well Chambers, Washout & Air Valve Chambers etc., also use GRP units as its components of assembly.

The miscellaneous units including ladders, safety cage, gully pots and handrails are manufactured in GRP to match the requirements.

Another important application of GRP in sewerage project is the manufacture of concreting shutters/moulds.





IN-SITU WORKS AND CUSTOMISED PRODUCTS

The onsite application of GRP lamination is a widely followed procedure in infrastructure projects. This methodology is adopted for the protection of the concrete walls of huge tanks & chambers, which cannot be laminated prior to the installation owing to logistical difficulties. The GRP in-situ lamination comes in various thicknesses and material specifications depending on the project requirements.



Another GRP in-situ process is associated with the site joining of installed pipelines. The pipe joints as well as the connections between pipes and pipe fittings are permanently reinforced by in-situ lamination. The type of lamination executed varies depending on the pipe specifications and the flow details in the pipe.

QSM's site work team is well trained in the site requisites, safety aspects and different work specifications and skilled in overcoming various hindrances that occur in a normal infrastructure site.



QSM has manufactured a number of customized GRP products which had become a necessity towards the completion of projects. The customized works include the decorative panels, domes, screens gratings, beams etc of different colours and thicknesses. All such products are made exactly in accordance with the client requirements. The advantages, drawbacks and flexibility of GRP in making custom products are explained and the works are executed on the basis of the drawings approved by the main contractor.





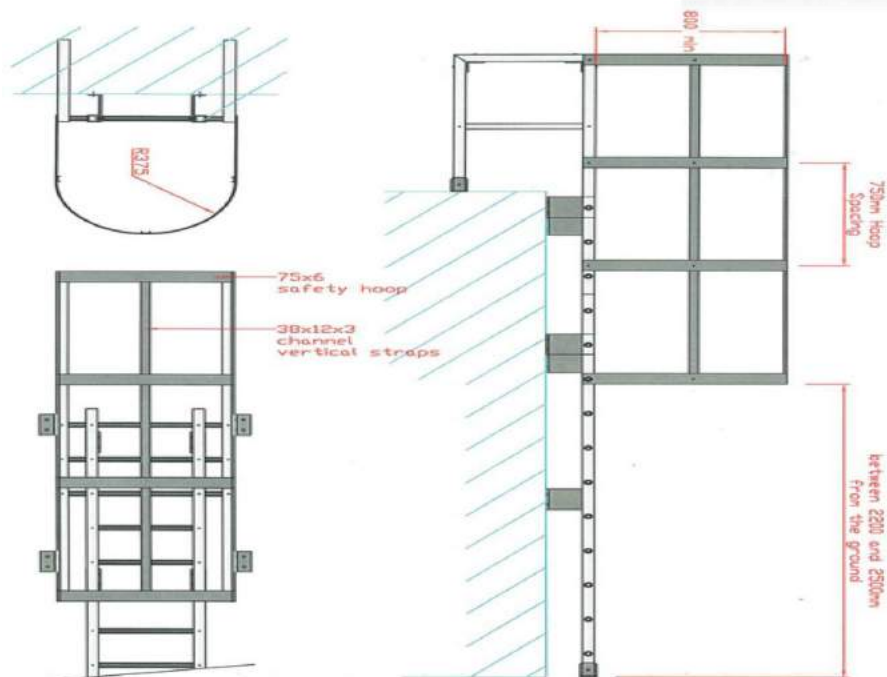
GRP LADDERS & SAFETY CAGE

(Quickstep Manufacturing)

GRP ladders offer an excellent alternative to steel and aluminum systems. The ladder brings together all the benefits that GRP can offer in a cost effective package that ensures years of maintenance free life, UV resistance, excellent insulator, anti-slip serrated surface and easy to grip channel. Rungs will withstand a 500kg load!!

A very high proportion of all industrial slip/fall accidents occur on vertical ladders. It is often the narrow, smooth, oily rungs on a traditional ladder which increases potential risks. Our unique rungs are formed from large diameter "easy-grip" 35mm section, and to further reduce slip risks, feature a multi-serrated surface.

They are fully fabricated units through pultrusion or by hand lay-up method that can come with or without a walkthrough arrangement and safety cage. With a weight reduction of 80% against steel, GRP Systems ladders are extremely easy to install. It offers maximum safety and peace of mind in areas such as wet wells, sumps, marine projects and chemical plants.





GRP KIOSKS & OTHER ENCLOSURES

(Quickstep Manufacturing)



GRP kiosks are protective housing which are designed and manufactured to provide the most effective and economic solution to customer requirements. GRP kiosks are fabricated with highly resilient molded exterior finishes and extensive scope of size options.

Benefits:

1. Durability and long service life
2. Maintenance free materials
3. Designed to withstand wind, corrosive elements, and seismic loadings thus fully compliant with relevant Engineering codes of practice
4. Robustness and security
5. Relocatable and extendable
6. Speed of build and flexibility better interfaces with other site requirements generating efficiencies



Applications:

Typical GRP Kiosk includes:

1. Switchgear
2. Generators
3. Pump housings
4. Substations
5. Analyzers
6. Gas regulators
7. Communications
8. Chemical Treatment
9. Control equipment
10. Compressors
11. Radio Stations
12. Telemetry
13. Meters
14. Transformers





QUICKSTEP HANDRAIL AND FENCING SYSTEM



Fiberglass Reinforced Plastic (FRP) Quick Step Handrail Systems are safe, OSHA compliant, corrosion resistant, virtually maintenance free, and easy to install. FRP Handrail are industrial /commercial railing systems for stair rails, platform/walkway handrails and guardrails. They are a critical piece of safety equipment that is often taken for granted in our daily lives. They provide extra stability when climbing stairs and prevent falls on a platform or balcony. They had the ability to provide the ultimate in corrosion resistance for aggressive environments such as offshore oil platforms, food processing plants, water treatment plants, mining industry for walkways and other architectural master pieces.

FRP handrail systems are easily assembled and installed from durable, pre-fabricated modular components or can be custom designed for specific applications. We offer a wide range of FRP railing options to fit any project. Our hand rail is a weather resistant alternative to traditional materials like wood or steel. It's built to last and virtually maintenance free.



FRP handrails provide superior solution to Metal Handrails for many applications like.
Easy to assemble.

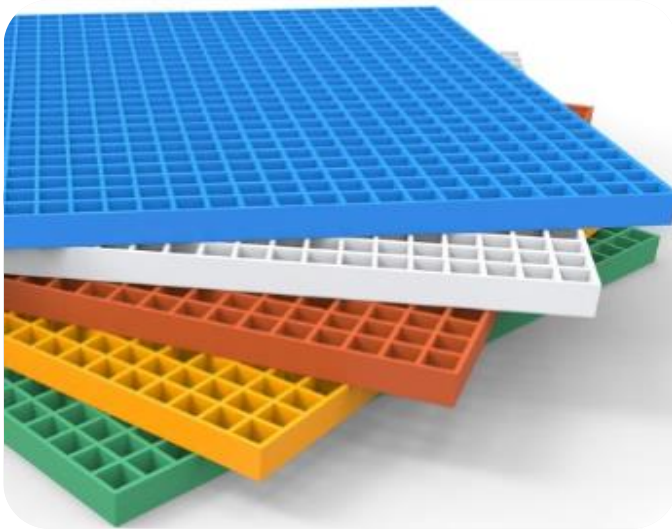
- Longer lasting compared to galvanized steel handrails.
- Low maintenance cost
- Strong and light weight.
- Corrosion resistance.
- Fire Retardant.
- UV and thermally stable.

Our hand rails are suitable for different types of structures and applications. These include safety barriers, shop fittings, as well as extreme environments such as mining, oil and gas, electrical sub stations and chemical plants. They can also be combined with our other FRP Structures, such as FRP Platforms.

QUICKSTEP FRP MOLDED GRATINGS:

Molded fiberglass grating is a premium-quality mesh grating panel is manufactured with continuous glass fiber strands and Resins. While molded grating is a chemical resistant flooring choice for many industrial applications, they are non-conductive, non-corrosive and have very low maintenance.

QuickGrate® molded gratings are easy to install and are available in variety of thickness and mesh size. Standard Panel Size is 1220 mm X 3660 mm.



Features of QuickGrate®

- Corrosion Resistant
- Easy to Fabricate
- Fire Retardant
- Impact Resistant
- Low in Maintenance
- Low in Conductivity
- Lightweight
- Bidirectional Load Bearing
- Easy to Install
- Cost Effective

QuickGrate® Molded gratings are available in different surface tops such as meniscus, antiskid and with checker plates. The Approximate weight figures are different from the above table for molded grating with checker plates. Besides available GRP/FRP Moulded Gratings, we do also offer customized Fiberglass molded gratings to our clients on special request. You just must explain your requirements to us and we are ready with cutting edge industrial solutions to help you. To know more on to our GRP/FRP Moulded Gratings and customized solutions, stay tuned with us.



OTHER SERVICES

(Quickstep Manufacturing)

Marine & Aviation

In the harsh marine environment fiberglass finishes have proven to be durable and easy to maintain. QSM has ventured in the modification/maintenance of GRP marine vessels. The factory facilities permit a customized effect for the work being executed.

GRP has wide application for the manufacture of light aircraft accessories due to its lightweight, corrosion resistance and durability.



Design & Engineering

This wing of QSM finds its application in the versatility of the miscellaneous customized works undertaken by the firm ranging from the modification/maintenance and manufacture of intricately shaped casting moulds which incorporate complex designs and shapes. The competent personnel of QSM make it a point to ensure that no type of GRP works is impossible, provided sufficient information and clarity is available about the project.



Design

QSM employs graduate and post graduate engineers fully competent in the design and structural analysis of composite equipment, using computer aided design and finite element analyses to assure that the equipment to be produced will meet the project requirements.

Drafting

Detailed drawings are submitted for approval by the customer to avoid any misunderstandings before any fabrication work commences.



Field Installation

For any large GRP repairs/maintenance of field tanks, duct systems and piping installations, QSM sends crews to provide field installation services including GRP "In-Situ" Works

After Sales Service

We always support our customers throughout their projects by providing comprehensive "After Sales Services." Installation sites are visited occasionally by our well-experienced Field Services Staff and special visits also made as per customer's request to ensure that the product is installed as recommended and round the clock emergency service as and when required by the customers is provided.





QUICKSTEP MANUFACTURING

P. O. Box 35015, Industrial City of Abu Dhabi I (ICAD I),
Abu Dhabi, UAE

Phone: +971 2 556 0083

Fax: +971 2 556 0067

email: info@quickstepmfg.ae

